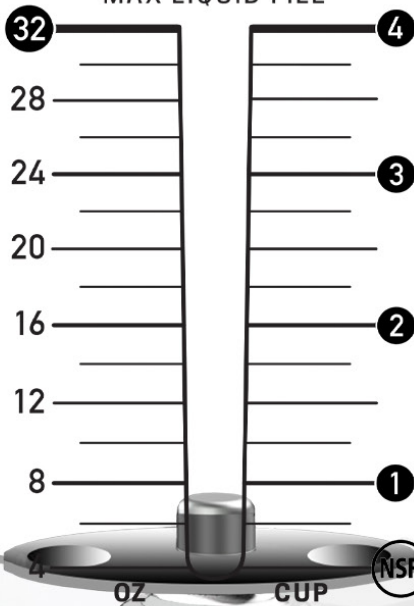


# FROTHING JAR™



## FROTHING

75oz Capacity  
MAX LIQUID FILL



**blendtec**  
COMMERCIAL



# FROTHING JAR™



## ROOM TO BREATHE

2 quarts of total volume provides a huge capacity for producing frothed liquids and foam. Instead of repeatedly creating single servings, you can now produce in batches and serve several customers at once.

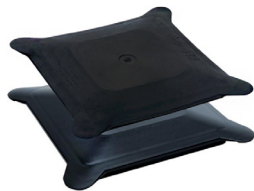
## WAVE OF THE FUTURE

Our stainless steel blade features a “wave” blend which enhances the frothing capability - easily doubling the volume of many liquids. The blade works great for cold foam coffee, non-dairy milks, whipping cream, hot chocolate, syrup and more!



### LATCHING LID

Preferred for non-sound enclosure models



### FLAT (HARD & SOFT)

For sound enclosure models only



### VIEW FROM THE TOP

Blendtec's innovative frothing blade



## NSF APPROVED

### USAGE

Quick and effective way to froth or aerate liquids

### BLADE

2-7/8 diameter 300 series stainless steel blade with “wave” blend

### VOLUME

Total Volume = 2 Quarts  
Starting liquid volume = 32 ounces



\*For international warranty and certification details please see your in-country distributor.

WWW.BLENDTEC.COM/COMMERCIAL | 1-800-BLENDTEC

SPS-064 A04, SPEC SHEET, FROTHING JAR, US ENG, JAN 2020

40-541  
**blendtec**  
COMMERCIAL